

MONTHLY MEMBERSHIP PROGRESS REPORT

District 11 E1

Results as of: 4/30/2026

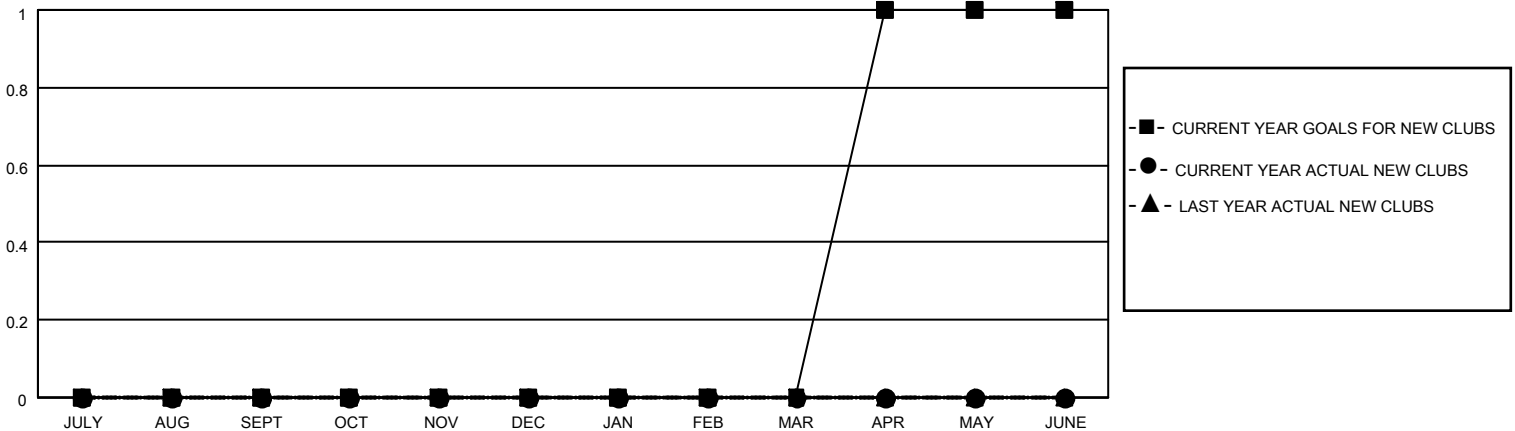
GMT:

LOCATION MICHIGAN

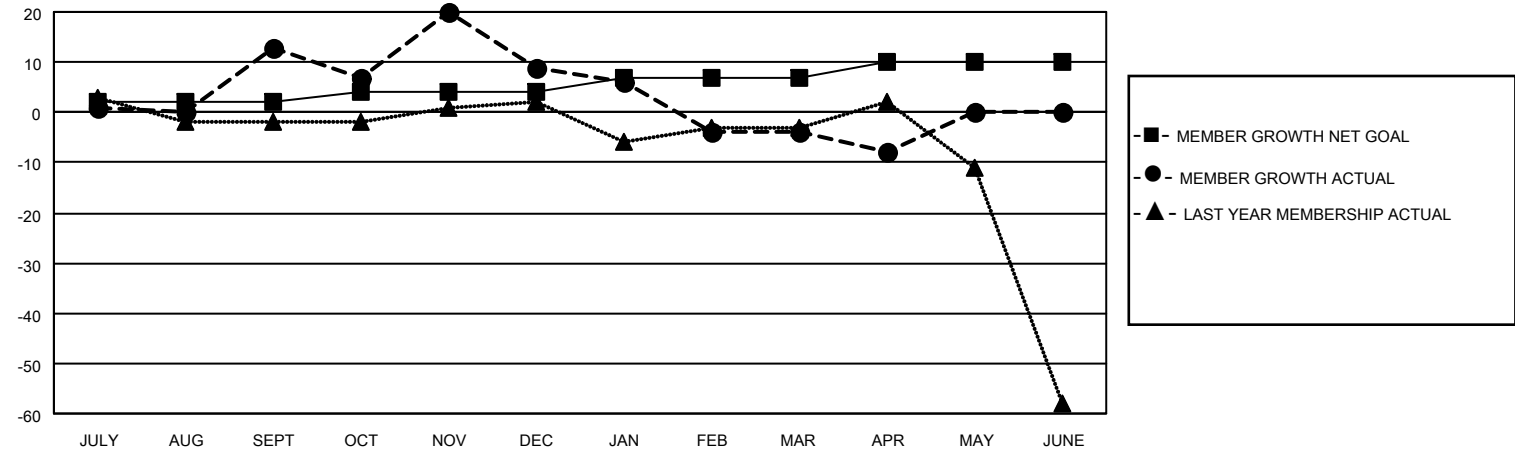
GMT CA

Clubs				Members			
RESULTS FOR 2025-2026				RESULTS FOR 2025-2026			
QUARTER	NEW CLUB GOAL	NEW CLUBS	DROPPED CLUBS	QUARTER	MEMBER GROWTH NET GOAL	MEMBER GROWTH ACTUAL	DROPPED MEMBERS ACTUAL (including transfers)
JULY/AUG/SEPT	0	0	0	JULY/AUG/SEPT	2	33	18
OCT/NOV/DEC	0	0	0	OCT/NOV/DEC	2	38	32
JAN/FEB/MAR	0	0	0	JAN/FEB/MAR	3	13	19
APR/MAY/JUNE	1	0	0	APR/MAY/JUNE	3	4	8

GOALS AND ACTUAL NEW CLUBS CUMULATIVE



GOALS AND ACTUAL MEMBERS CUMULATIVE



DROPPED CLUBS: 0	19 CLUBS OF 35 ADDED 1 OR MORE NEW MEMBERS	GENDER DISTRIBUTION
		MALE 531 (61.96%)
		FEMALE 327 (38.16%)
DROPPED MEMBERS	CLICK HERE FOR CUMULATIVE MEMBERSHIP DATA	TOTAL FAMILY UNIT MEMBERS 221
DECEASED 14		FAMILY MEMBERS PAYING HALF DUES 112
CLUB CANCELLED 0		
OTHER 62		
TOTAL 76		